

MUNICIPALITY OF CROWSNEST PASS

BYLAW NO. 1061, 2021

LUB REDESIGNATION: LOT 1 & 2, BLOCK 7, PLAN 0613673 (22406 & 22410 – 29 AVENUE, BELLEVUE) FROM MULTIPLE RESIDENTIAL- R-2A TO DUPLEX RESIDENTIAL- R-2

BEING a bylaw of the Municipality of Crowsnest Pass in the Province of Alberta, to amend Bylaw No. 868-2013, being the municipal Land Use Bylaw.

WHEREAS the Council of the Municipality of Crowsnest Pass wishes to redesignate the lands legally described as Lots 1 & 2, Block 7, Plan 0613673, within the SW¼ 21-7-3-W5M containing 778.14 m² and 600.95 m², as shown on Schedule 'A', from "Multiple Residential R2-A" to "Duplex Residential – R-2".

AND WHEREAS the purpose of the proposed amendment is to align the zonings on these parcels with the previously approved applications and therefore bring the development into compliance with the "Residential – R-2" land use district.

AND WHEREAS the Municipality must prepare an amending bylaw and provide for its consideration at a public hearing.

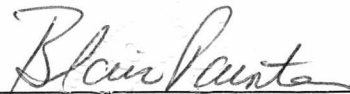
NOW THEREFORE, under the authority and subject to the provisions of the Municipal Government Act, Revised Statutes of Alberta 2000, Chapter M-26, as amended, the Council of the Municipality of Crowsnest Pass in the Province of Alberta duly assembled does hereby enact the following amendments:

1. The Land Use District Map be amended to redesignate the lands legally described as Lots 1 & 2, Block 7, Plan 0613673, within the SW¼ 21-7-3-W5M containing 778.14 m² and 600.95 m², as shown on Schedule 'A', from "Multiple Residential R2-A" to "Duplex Residential – R-2".
2. Bylaw No. 868-2013, being the Land Use Bylaw, is hereby amended.
3. This bylaw comes into effect upon third and final reading hereof.

READ a **first** time in council this 2nd day of February 2021.

READ a **second** time in council this 9th day of March 2021.

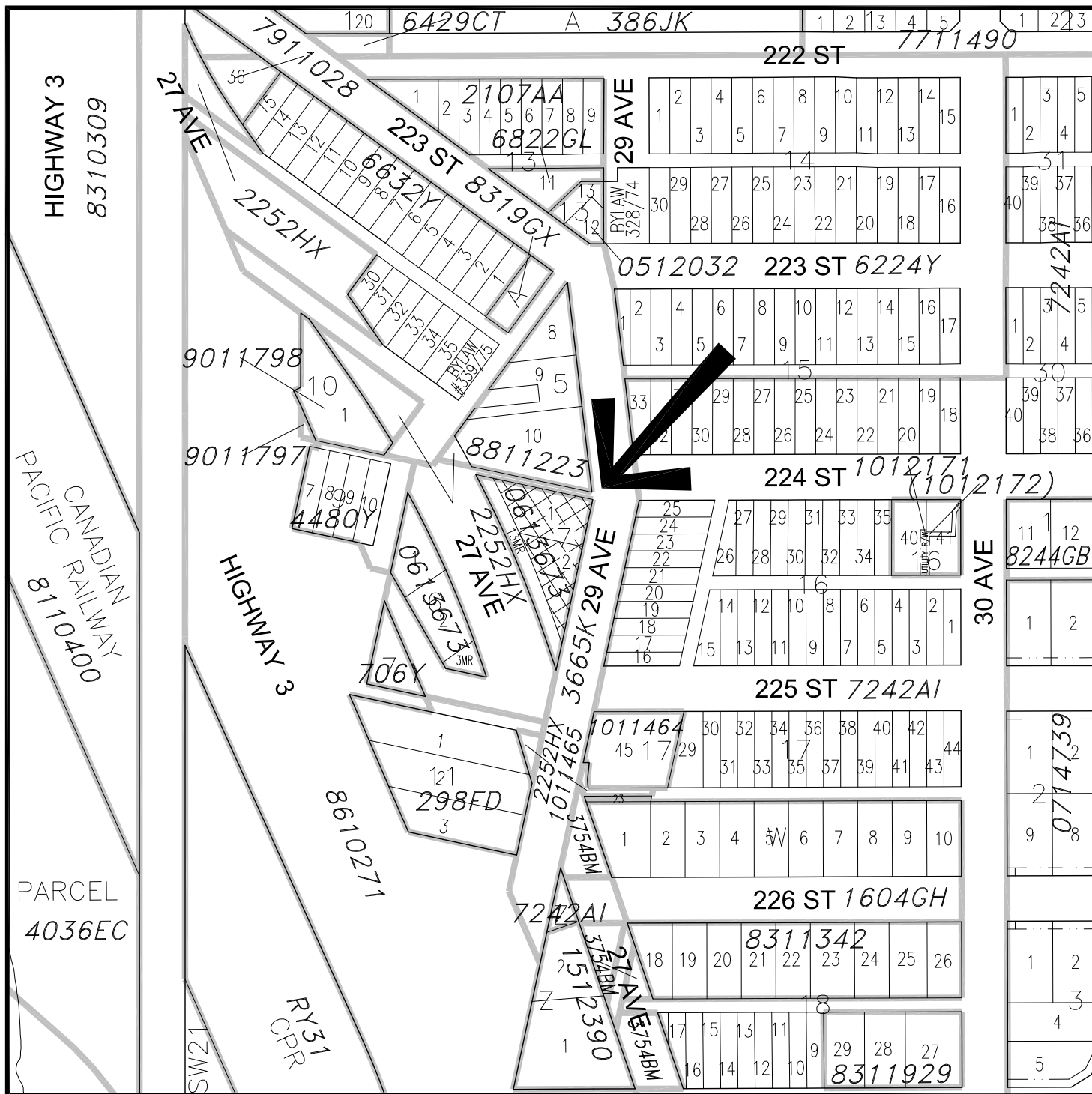
READ a **third and final** time in council this 9th day of March 2021.



Blair Painter
Mayor



Patrick Thomas
Chief Administrative Officer



LAND USE DISTRICT REDESIGNATION SCHEDULE 'A'



FROM: Multiple Residential R-2A

TO: Duplex Residential R-2

LOTS 1 & 2, BLOCK 7, PLAN 0613673 WITHIN

SW 1/4 SEC 21, TWP 7, RGE 3, W 5 M

MUNICIPALITY: MUNICIPALITY OF CROWSNEST PASS

DATE: JANUARY 5, 2021

Bylaw #: 1061-2021

Date: March 9, 2021



MAP PREPARED BY:
OLDMAN RIVER REGIONAL SERVICES COMMISSION
3105 16th AVENUE NORTH, LETHBRIDGE, ALBERTA T1H 5E8
TEL. 403-329-1344
"NOT RESPONSIBLE FOR ERRORS OR OMISSIONS"

