

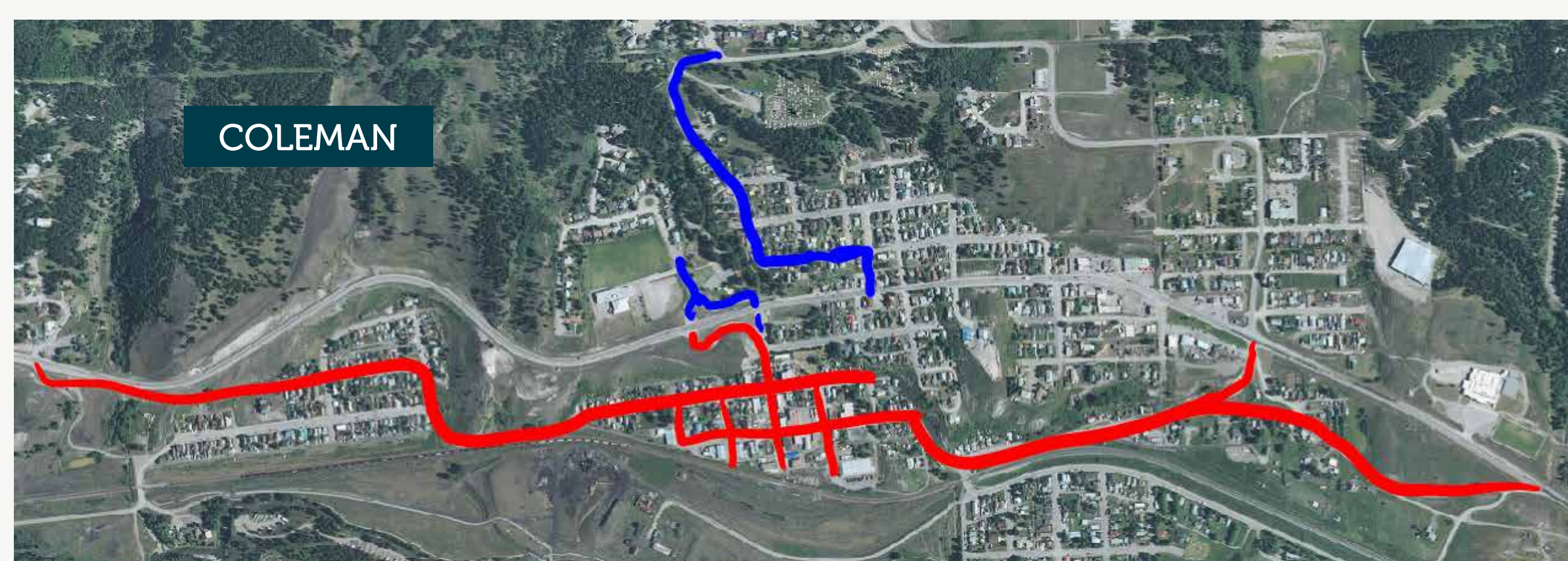
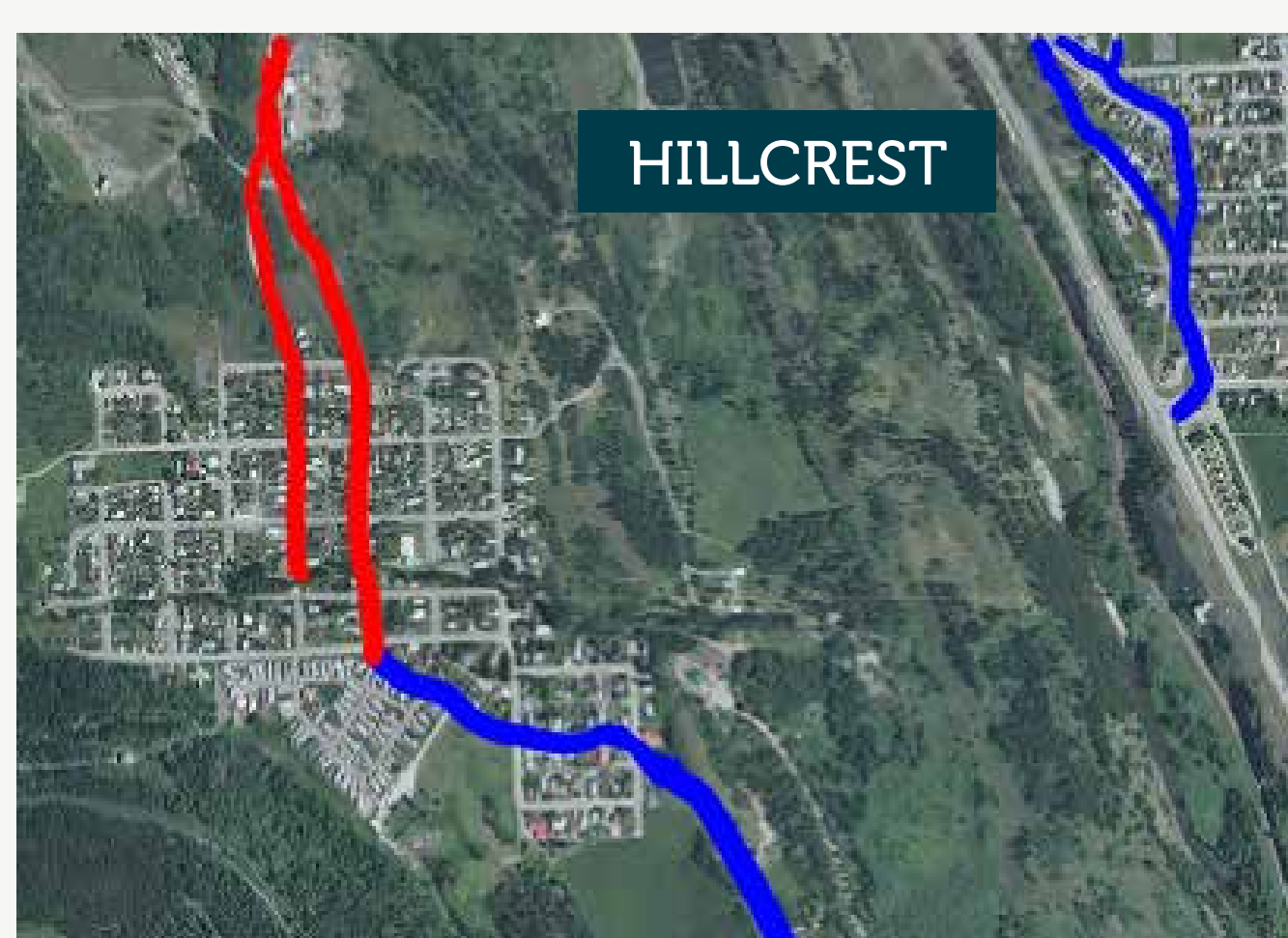
Snow Removal

The Municipal Operations Department is responsible for maintaining the roads throughout the community which includes 95km of paved surfaces and over 100km of gravel surfaces. The Municipality shall endeavor to maintain the safety of the public through a defined winter maintenance program for its transportation system and that all reasonable efforts will be made to ensure access to vital services and to provide reasonable access to all areas of the community.

Municipal crews follow the Snow Clearing & Ice Control Policy that was approved by Council to provide an efficient, consistent, and cost effective means to control snow and ice on the Municipal roadways.

Snow is cleared from public roadways according to a 5 level priority system as follows:

- Level "A"** Routes include all major transportation routes (arterial) within the municipality, emergency vehicle accesses, commercial core business areas, and roadways with major slopes.
- Level "B"** Routes includes distribution routes (collector) as well as school zones and industrial areas.
- Level "C"** Routes includes the remainder of roadways specifically in residential areas under Levels A and B as well as direct access laneways.
- Level "D"** Routes includes laneways, municipal owned parking areas, and recreational roadways.
- Level "E"** Routes includes recreational accesses and the removal of snow in commercial areas to facilitate parking and remaining snow ridges across residential driveways.



SNOW REMOVAL ROUTES

Red - Arterial Road
Blue - Collector Road

